

DESIGN BY MARIO BELLINI

HAY

# AMANTA

## HIGHLIGHTS

- An iconic seating solution from the '60s defined by its sculptural design and organic, low-slung silhouette
- Versatile modular sofa available as a single seat or pre-configured 2-, 3-, or 4-seater variants.
- Allows users to create various seating solutions – from compact lounge chair to extended sofa to suit daily needs, room size, or changing lifestyles
- Amanta's ABS shell is made from at least 99% post-consumer recycled content
- The cushions are made of 94% biomass balance foam, meaning that 94% of the raw materials are biobased
- With circularity in mind, the sofa is created for disassembly
- Available in different shell colours, with variety of fabric and leather upholstery options
- Suitable for a wide variety of private and public environments



# AMANTA DESIGN BY MARIO BELLINI

Originally designed in the late 1966, the Amanta Sofa embodies the essence of innovative mid-century Italian design. Defined by its modular construction and low-slung silhouette, it reflects Mario Bellini's multidisciplinary expertise in form and function. Available as a single module or in pre-configured 2-, 3-, or 4- seater variants, it adapts effortlessly to both domestic and public settings. Now reissued within HAY's universe, Amanta brings timeless Italian design into the present.

Visionary Italian designer and architect Mario Bellini is known for his multidisciplinary, conceptual approach to design. With a deep understanding of proportion and shape, he seamlessly merges form and function across furniture, industrial design, and architecture. Bellini's creations have earned numerous accolades, including eight Golden Compass awards and a solo retrospective at MoMA. Together with HAY, he has reissued the Amanta Sofa, originally designed in 1966.

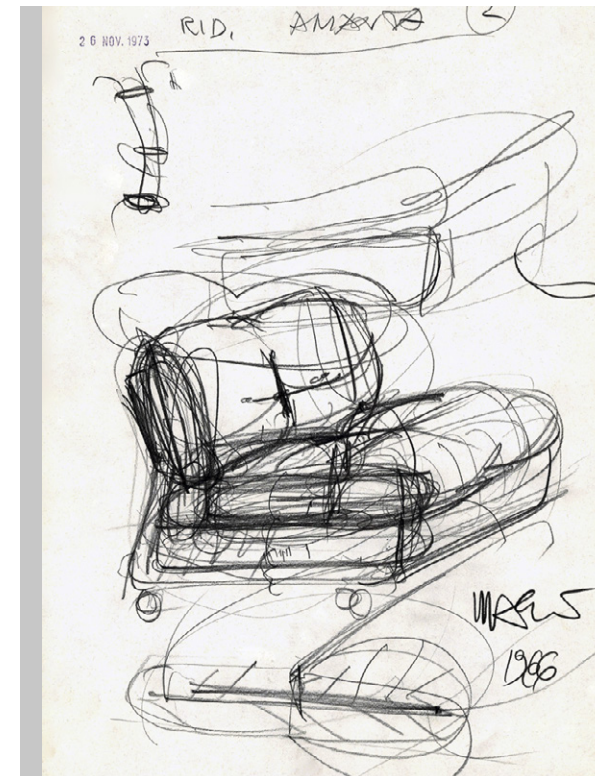


Mario Bellini

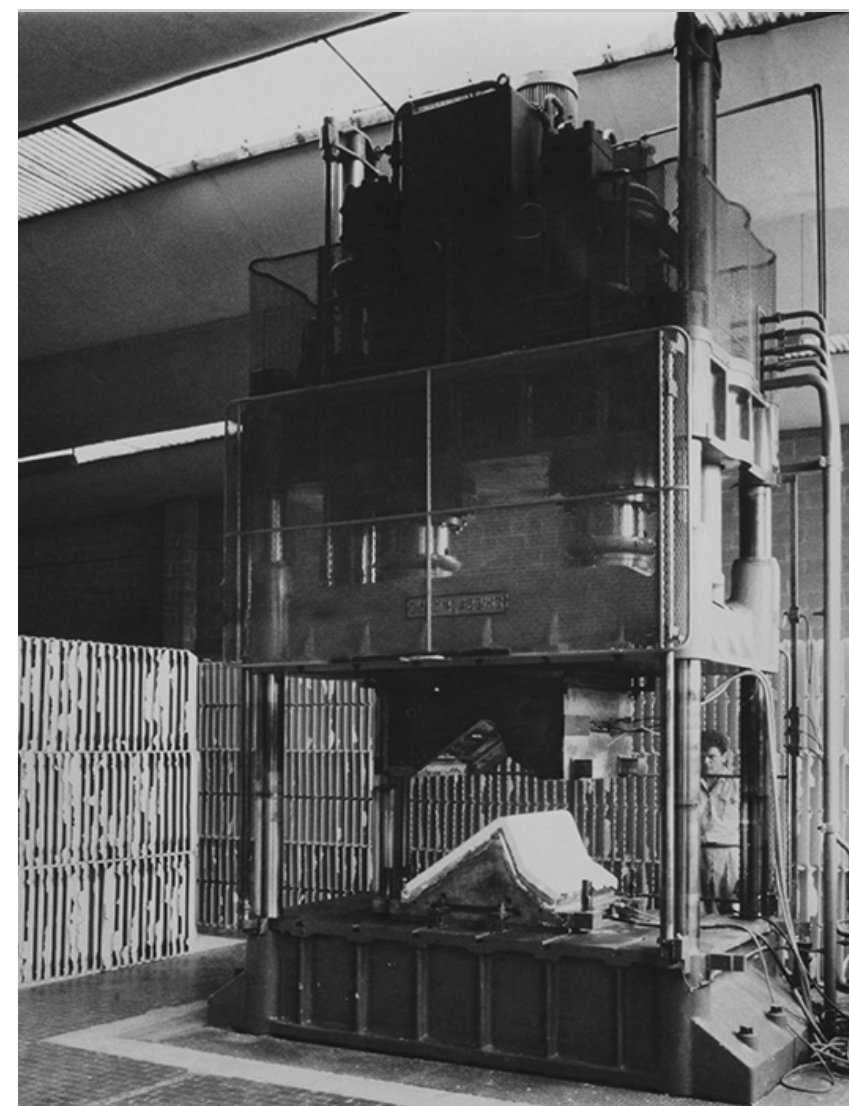
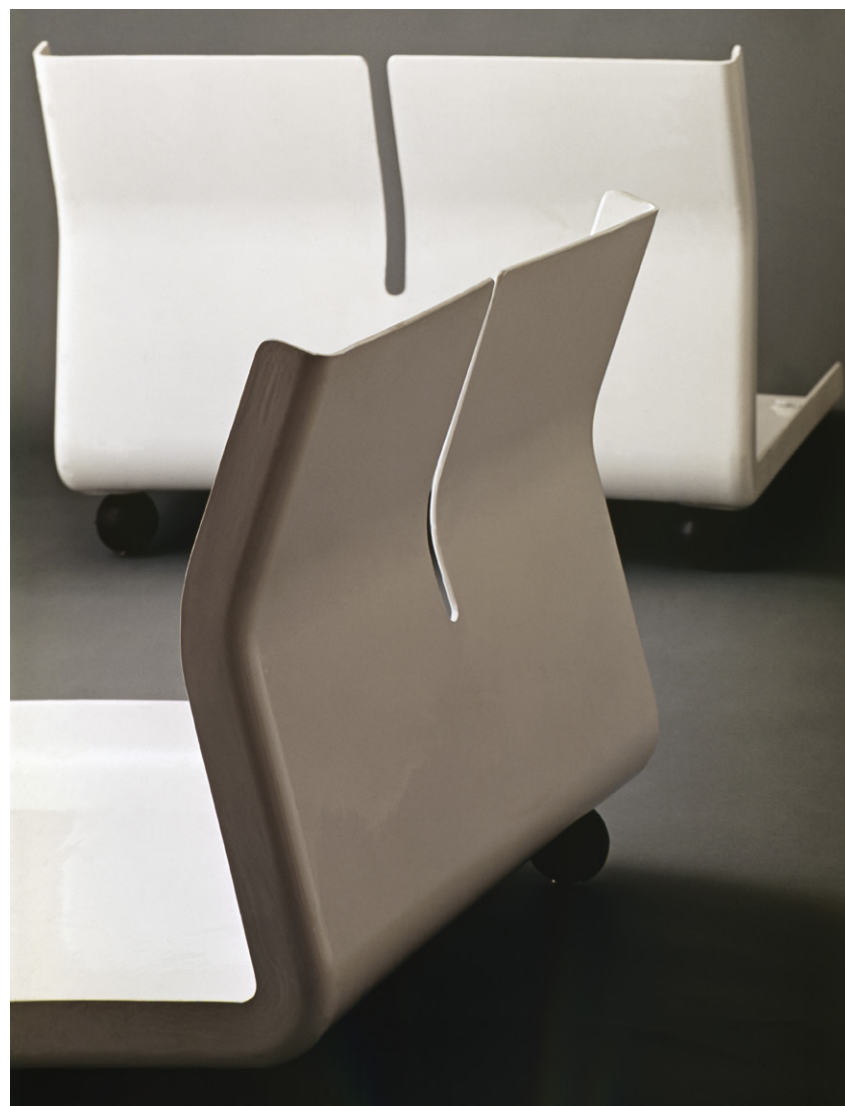


Amanta 1 Seater family













Amanta 1 Seater | Sense forest | Cream beige shell



Amanta 1 Seater | Sense forest | Cream beige shell





Amanta 3 Seater | Naveli 0723 | Frost blue shell  
Amanta 1 Seater | Turf blue grey | Frost blue shell





Amanta 1 Seater | Yumi 1851 | Burgundy red shell



Amanta 1 Seater | Yumi 1851 | Burgundy red shell





MATERIALS

SHELL  
ABS made from at least 99% post-consumer recycled content

CUSHIONS  
Moulded plywood board with 94% biomass-balanced foam cushions.  
Minimum 87% biomass-balanced for CMHR-treated foam cushions

FEET  
100% post-consumer recycled ABS in black

FABRIC & LEATHER UPHOLSTERY  
Please see our Fabric Overview for approved standard fabrics.  
[LINK TO OVERVIEW](#)

COLOUR & FINISH

Please note that the colours are indicative



Anthracite  
High-gloss



Cream beige  
High-gloss



Frost blue  
High-gloss

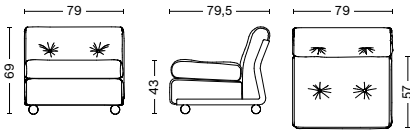


Burgundy red  
High-gloss

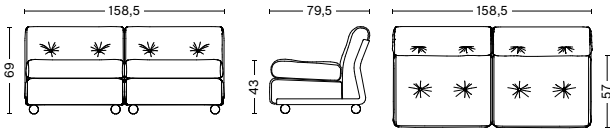


Bottle green  
High-gloss

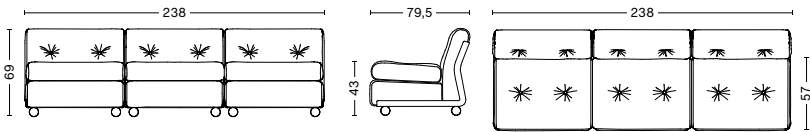
DIMENSIONS



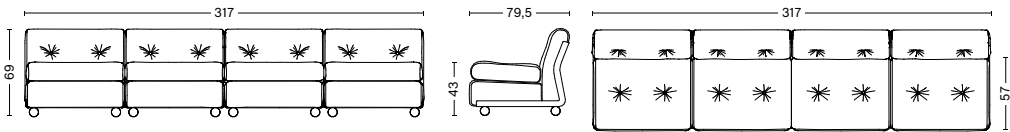
AMANTA 1 SEATER  
Width 79 cm  
Depth 79,5 cm  
Height 69 cm  
Seat height 43 cm  
Seat depth 58,5 cm  
Weight 30 kg



AMANTA 2 SEATER  
Width 158,5 cm  
Depth 79,5 cm  
Height 69 cm  
Seat height 43 cm  
Seat depth 58,5 cm  
Weight 60 kg



AMANTA 3 SEATER  
Width 238 cm  
Depth 79,5 cm  
Height 69 cm  
Seat height 43 cm  
Seat depth 58,5 cm  
Weight 90 kg



AMANTA 4 SEATER  
Width 317 cm  
Depth 79,5 cm  
Height 69 cm  
Seat height 43 cm  
Seat depth 58,5 cm  
Weight 120 kg





### PRODUCT INFORMATION

DESIGN YEAR  
Relaunched 2025

COUNTRY OF ORIGIN  
Poland

OPTIONS  
CMHR foam (fire retardant)

CONSTRUCTION  
Fully assembled. Connecting modules need to be connected with connectors

WARRANTY  
HAY provides a 10-year product warranty. Spare parts are available throughout the 10-year warranty period. Please contact the HAY sales team for further information about the warranty terms and conditions.


CARE & MAINTENANCE  
Our Care & Maintenance offers guidance for optimal maintenance of your HAY product.  
[LINK TO CARE & MAINTENANCE](#)


RECYCLING & DISASSEMBLY  
The furniture is designed to be a long-lasting furniture made to last for many years. The furniture is 100% recyclable and all parts can be fully separated and recycled. All parts can be delivered to a suitable recycling facility.  
[LINK TO DISASSEMBLY INSTRUCTION MANUAL](#)

### CERTIFICATES & TESTS

EN TEST  
EN 16139 - L2  
Non-domestic seating

BIFMA  
ANSI/BIFMA X5.4  
Lounge and public seating  
IN PROCESS

 EU ECOLABEL  
Applies to EU-Ecolabelled fabrics.  
Does not apply to CMHR foam.  
IN PROCESS

 FSC™ MIX 70%  
Made from FSC™-certified wood  
and other controlled materials.

### SUSTAINABILITY

HAY focuses on developing long-lasting products that minimise the environmental impact throughout their lifecycle. We prioritise carefully selecting materials, such as recycled content, FSC™-certified wood, and water-based lacquer, while continuously increasing the number of eco-certified products. We adhere to strict regulatory requirements, and the majority of our products are tested to meet international standards for strength, durability, and safety.  
[LINK TO ENVIRONMENTAL PROFILE](#)

### DOWNLOADS

Packshots and lifestyle photos, 2D / 3D files, care and maintenance, instructions, test certificates, product fact sheets, and product presentations are available in our Digital Library at hay.com.  
[LINK TO DIGITAL LIBRARY](#)