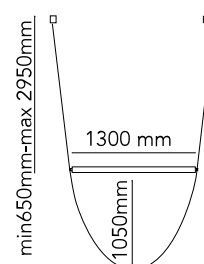


## Wireline

Designed by Formafantasma, 2019

45W - 2793lm - 2700K - CRI> 90

Suspension lamp with diffused light. Tubular in transparent extruded glass and internal diffuser in opal PC. Ferrules made with CNC technology in satin stainless steel. Extruded cable in pink and forest green rubber. Injection molded PC rosette in the same finishes as the cable. The electronics integrated in the ceiling rose allows the use of different dimerization systems: push, 1-10, potentiometer, DALI. In the absence of these systems, the luminous flux can be set during installation, with the push system included in the canopy. Useful length of the cable 3mt.



Are you a professional and your project needs consulting and support?

[BOOK AN APPOINTMENT](#)

### Main specifications

|                        |                     |
|------------------------|---------------------|
| Mounting               | Suspension          |
| Environments           | Indoor dry location |
| Light source type      | LED                 |
| Light sources included | Yes                 |
| LED type               | LED Module          |
| Power (W)              | 45                  |
| System power (W)       | 45                  |
| Lumen Output (lm)      | 2793                |


### Physical

|                             |       |
|-----------------------------|-------|
| Colour                      | Green |
| Length (mm)                 | 1300  |
| Cord colour                 | Green |
| Cord length (mm)            | 4050  |
| Canopy colour               | Green |
| Canopy length/diameter (mm) | 130   |
| Canopy height (mm)          | 70    |
| Net weight (kg)             | 7.8   |
| Package volume (m3)         | 0.05  |
| IP internal                 | 20    |

### Download

Mounting instructions  PDF

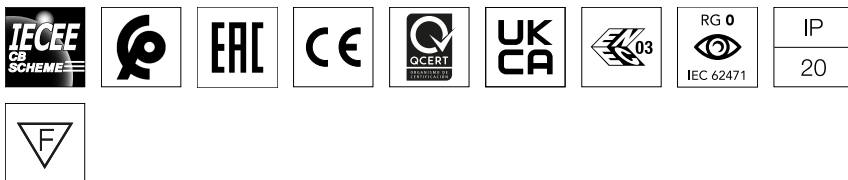
### Photometric Files

LDT / IES  LDT

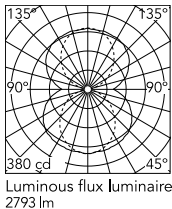
### Technical Drawings

3D  ZIP

 Bim  ZIP



### Schematic light drawing



### Photometric

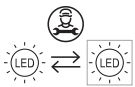
|                    |           |
|--------------------|-----------|
| Lighting type      | Total     |
| Light distribution | Symmetric |
| CCT (K)            | 2700      |
| CRI>               | 90        |
| Extreme cut off    | No        |

### Electrical

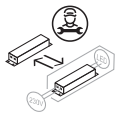
|                    |   |
|--------------------|---|
| Insulation class   | I   |
| Frequency (Hz)     | 50/60   |
| Main voltage (Vac) | 120-277   |
| Power supply       | Integrated  |
| Dimmable           | Yes   |
| Power supply type  | Dimmable 0-10V,<br>Dimmable Push,<br>Dimmable 1-10V,<br>Dimmable DALI 1 |
| Dimming interface  | Remote Dimmable<br>(Dimmer Not<br>Included)                             |
| Batteries inside   | No  |

### Ecodesign and Energy Labelling

This product contains a light source of energy efficiency class F

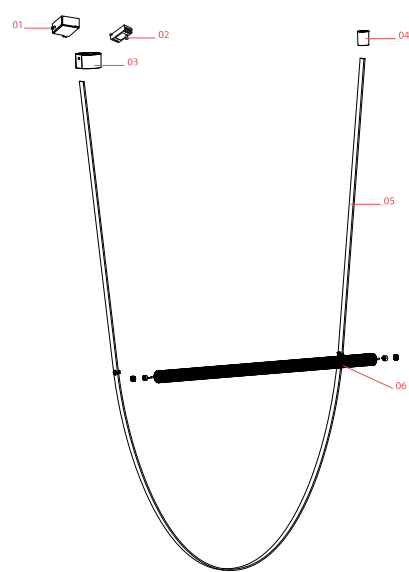


Replaceable (LED only) light source by a professional



Replaceable control gear by a professional

Spare Parts



|     |  |           |
|-----|--|-----------|
| 01. | Power supply unit for led                                | RF22934   |
| 02. | Led dimmer kit   | RF34197   |
| 03. | Wireline Assembly Rose Cover<br>Green                    | RF9523139 |
| 04. | Wireline Assembly Suspension<br>Rose for Wirelines Green | RF30045   |
| 05. | WireLine Green Wire                                      | F9522039  |
| 06. | WireLine Body  | F9521000  |



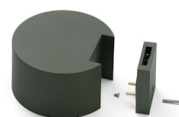
RF22934

Power supply unit for led



RF34197

Led dimmer kit



RF9523139

Wireline Assembly Rose Cover  
Green



RF30045

Wireline Assembly Suspension  
Rose for Wirelines Green



F9522039

WireLine Green Wire



F9521000

WireLine Body